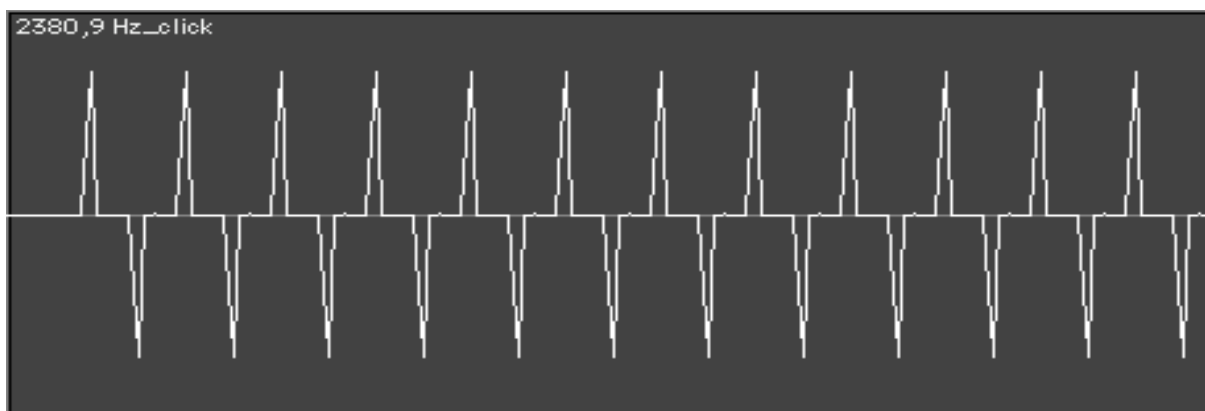
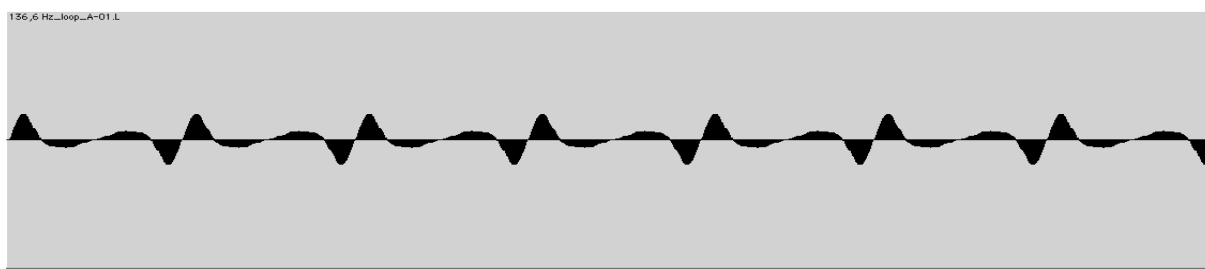


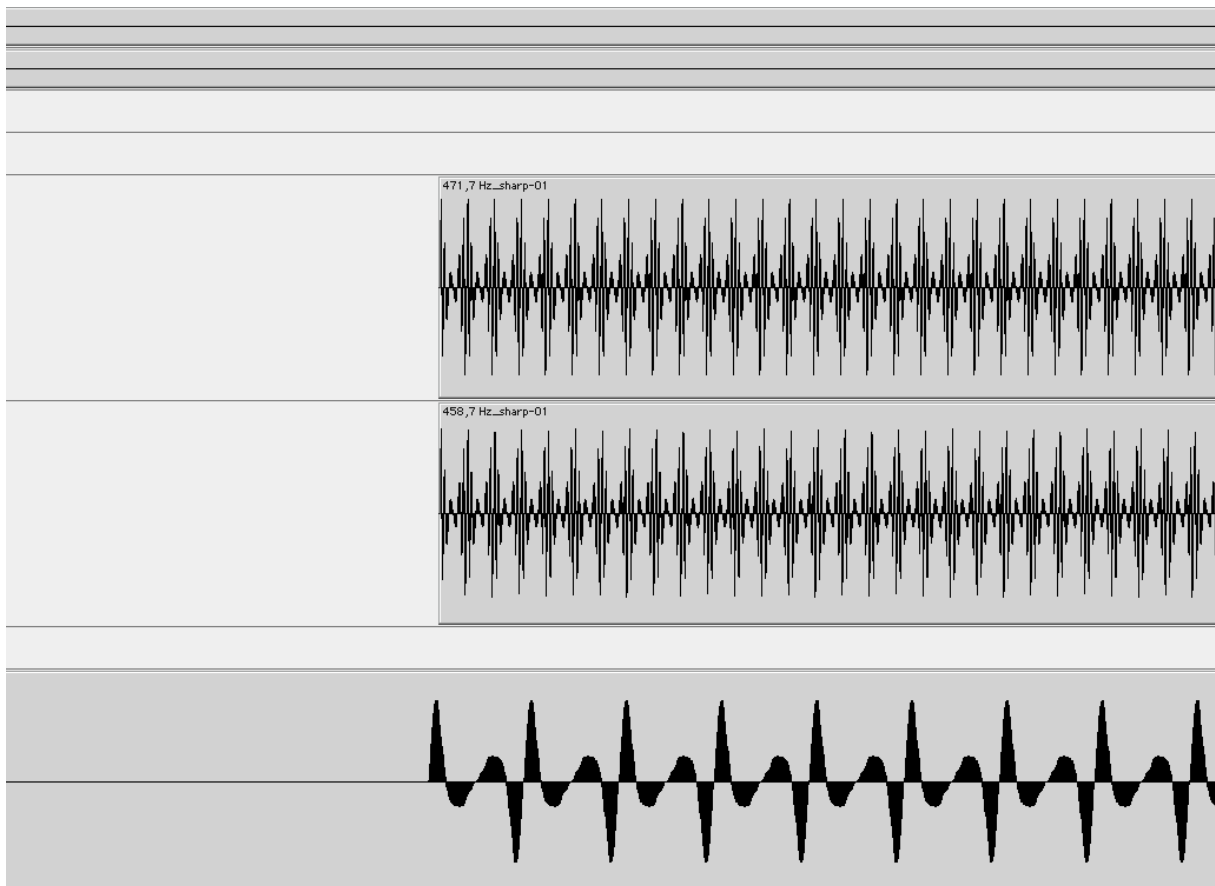
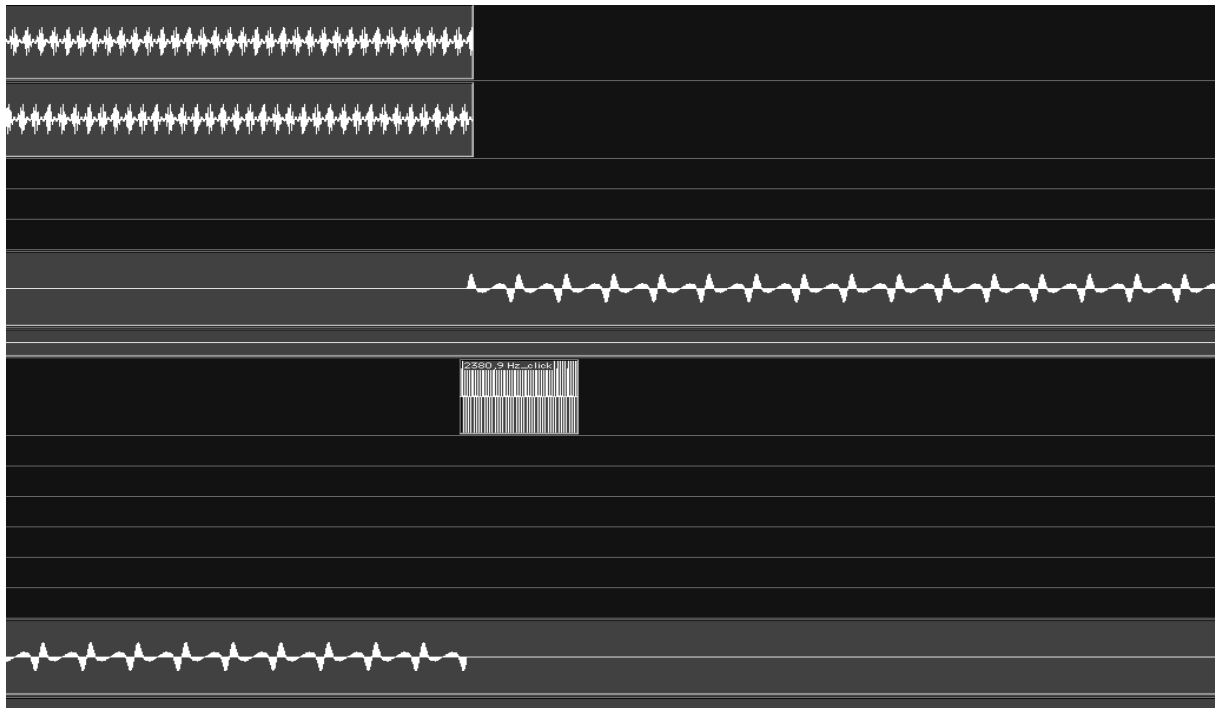
Ralf Hoyer

ZEITgezeichnet (2010)

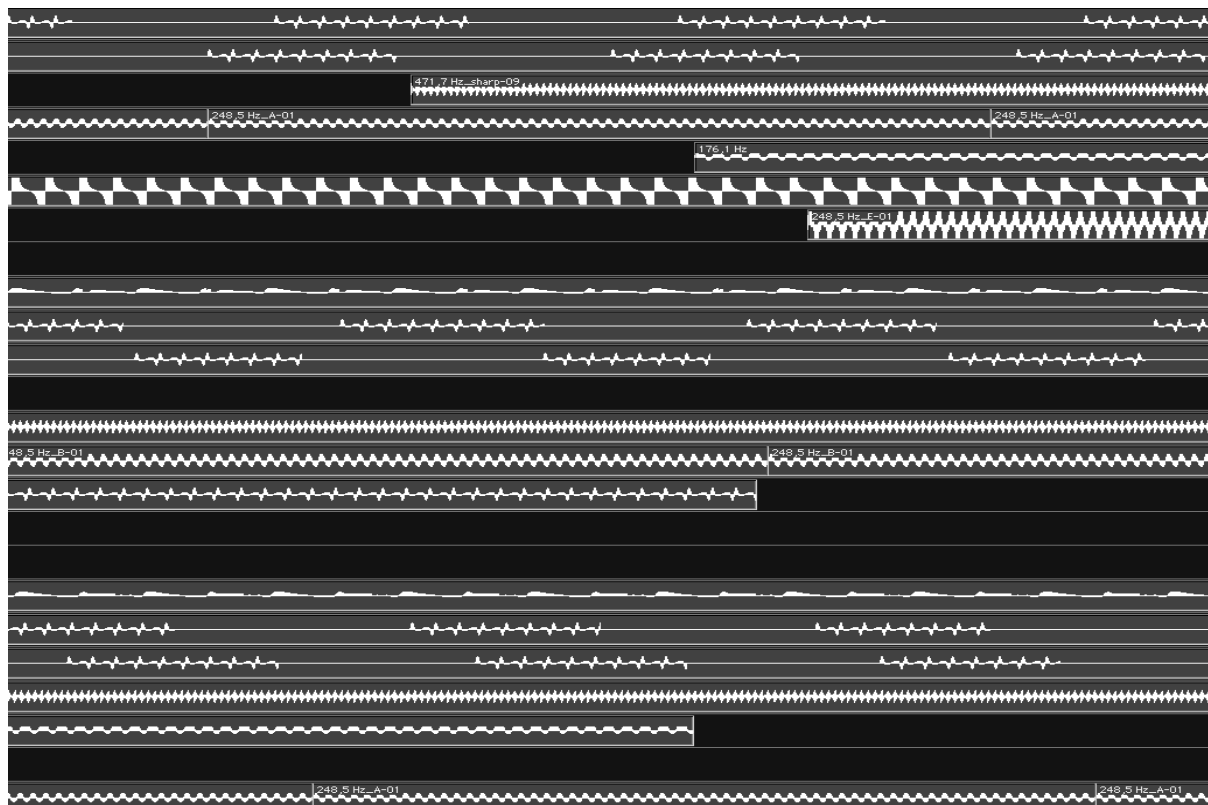
Ansichten verschiedener Wellenformen und deren Überlagerungen
(Programm: ProTools / Korrekturstift / Handzeichnung copy/paste/invert/revers)

©Ralf Hoyer

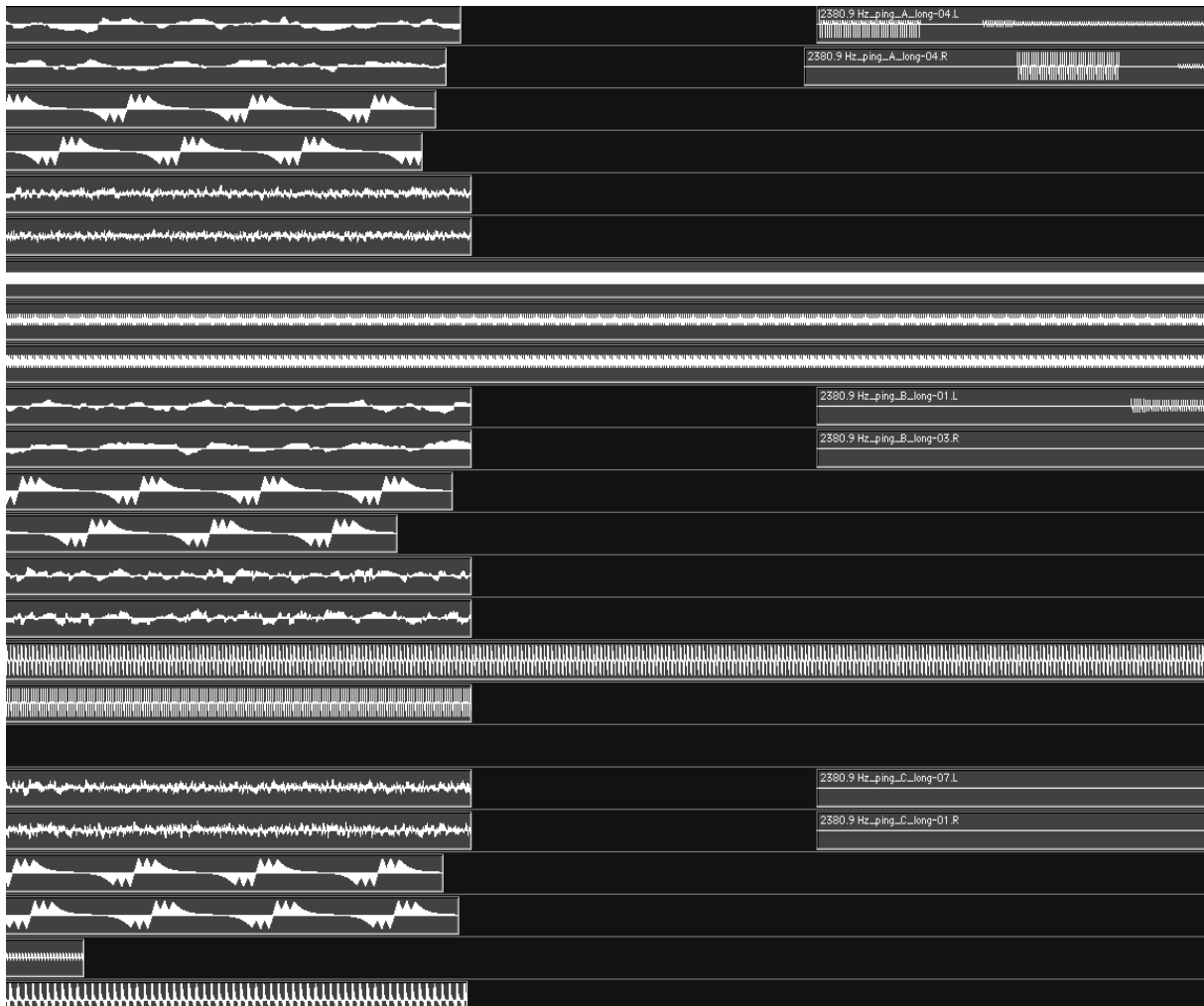




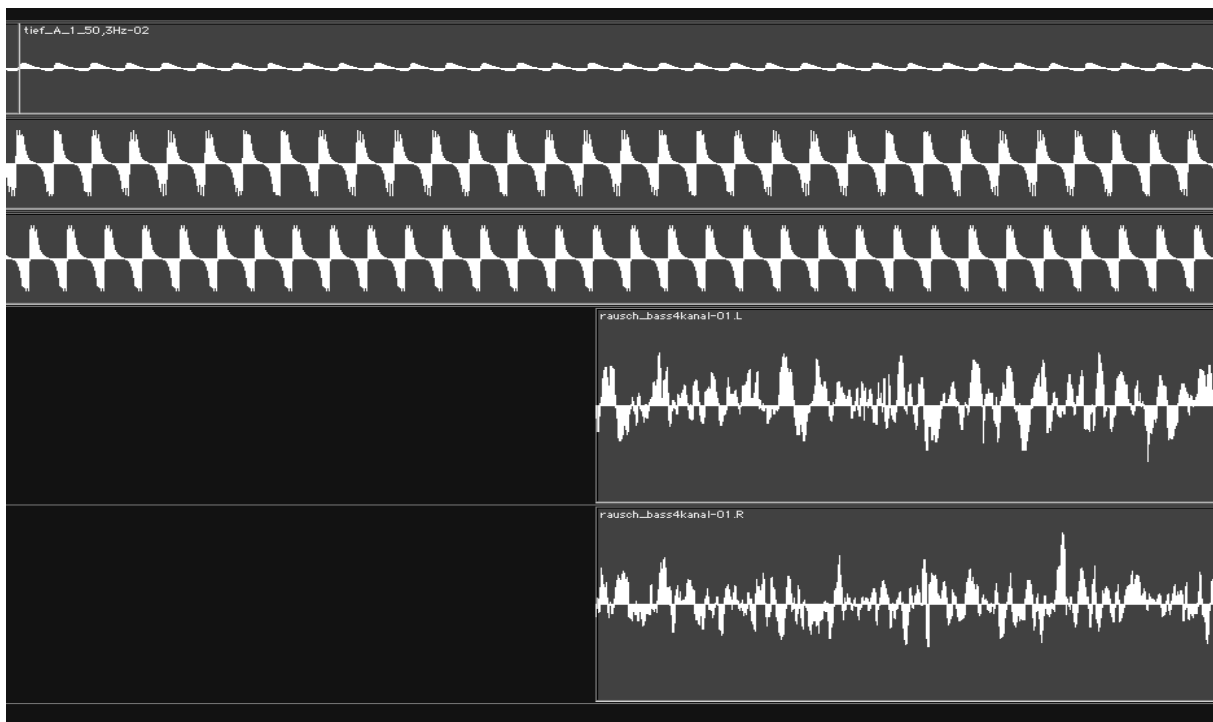
aus Teil 1

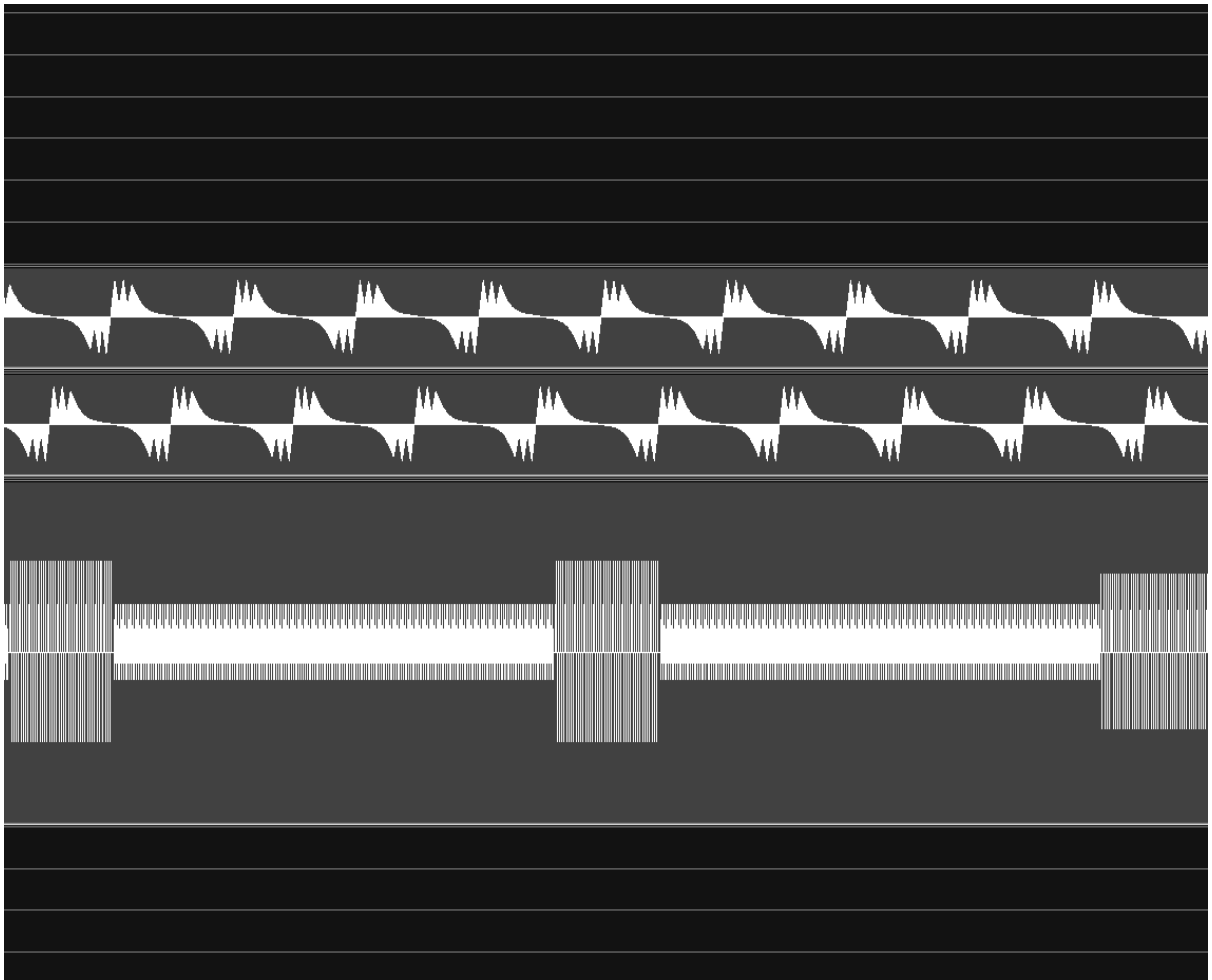
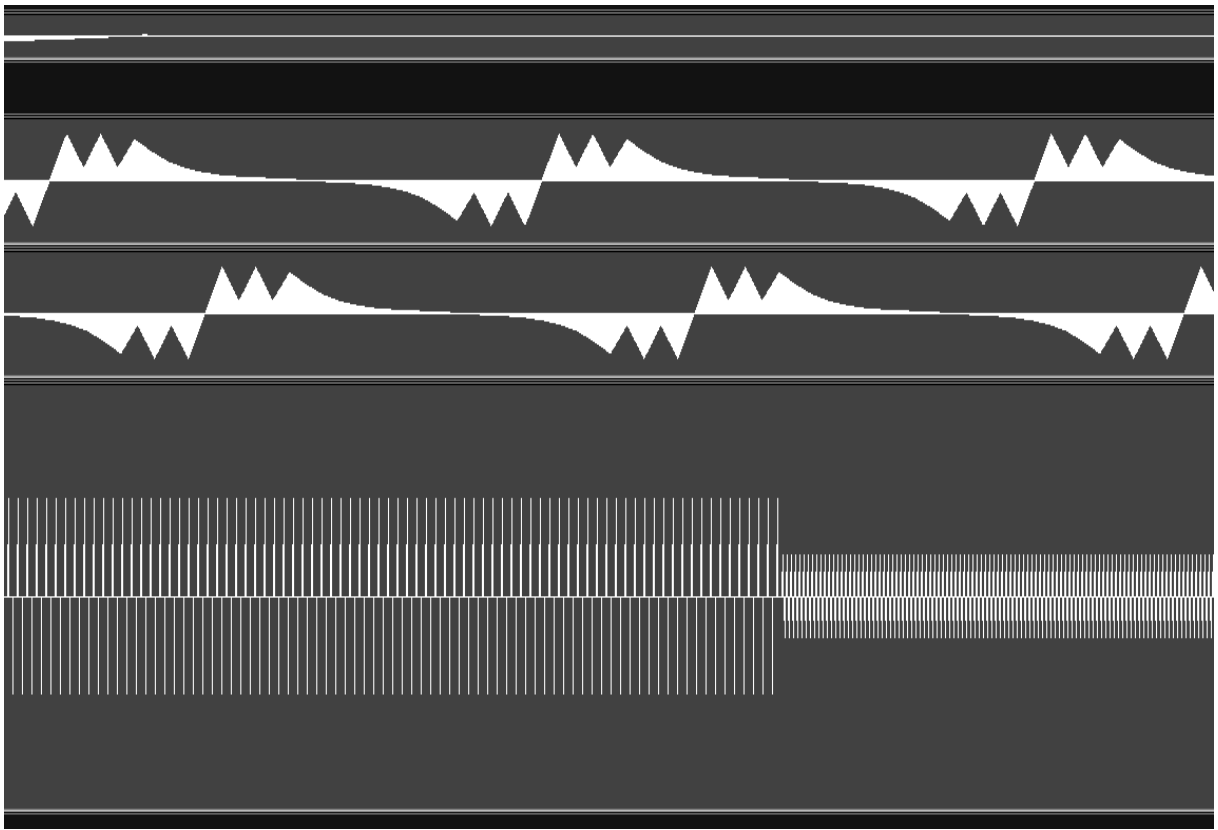


Übergang Teil 1 zu Teil 2

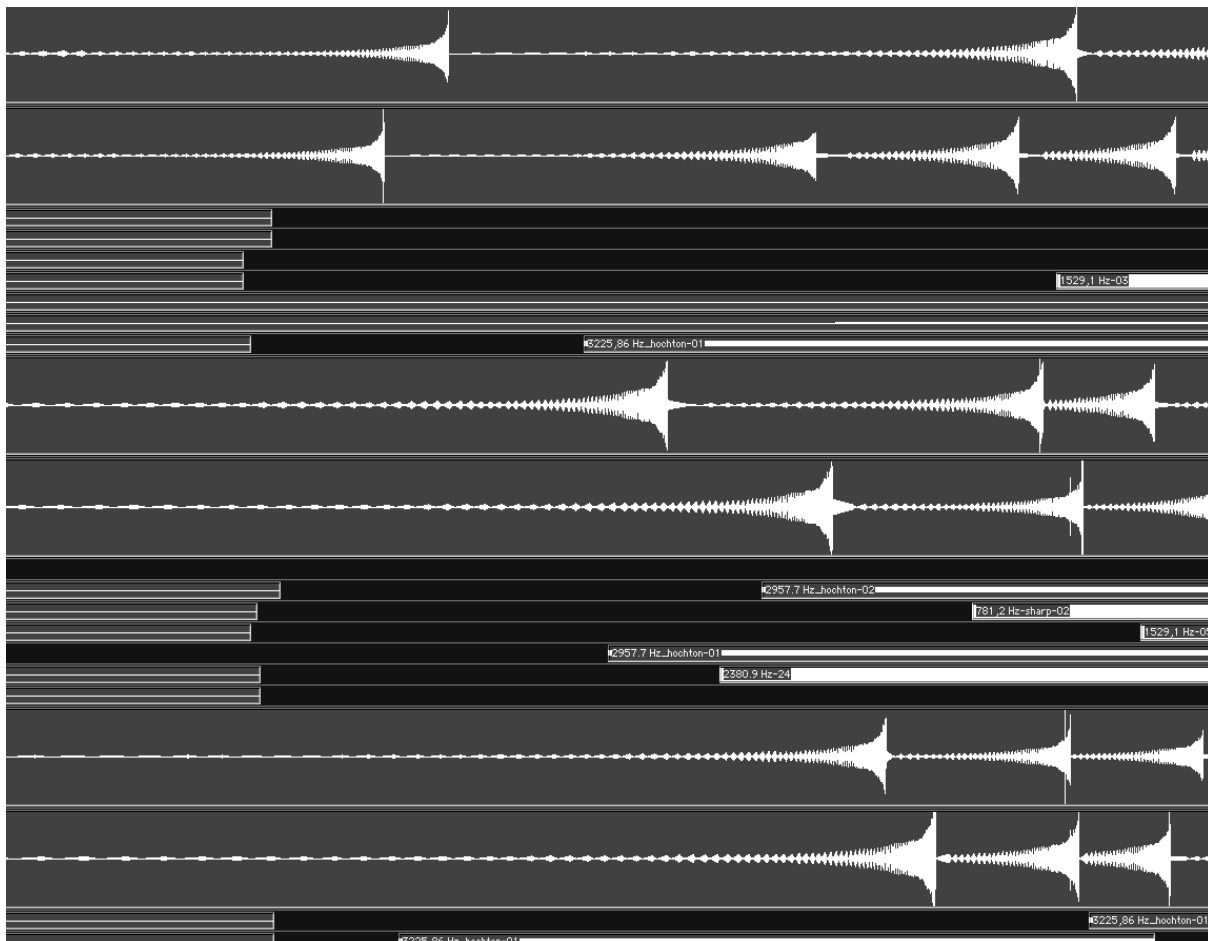


aus Teil 2 („Pastorale“)





aus Teil 3 („La Campanella“)



Schluss Teil 3

